

# ENDOW IOWA | TAX CREDIT PROGRAM



The Endow Iowa Tax Credit program was created in 2004 and since then has leveraged over \$288 million in endowment gifts to support Iowa communities and charitable causes. This program has made nearly \$67 million in tax credits available to a wide variety of donors. For the past six years, the annual tax credit limit has been \$6 million per year and each year every tax credit has been distributed. The program is administered by the Iowa Economic Development Authority (IEDA) in collaboration with the Iowa Council of Foundations (ICoF).

## ENDOW IOWA TAX CREDITS:

- |   |  |   |   |   |
|---|--|---|---|---|
| <p>1</p> <p><b>OFFER A 25% STATE INCOME TAX CREDIT</b></p> <p>to donors who make gifts to an endowed fund at a qualified community foundation* in Iowa;</p> | <p>2</p> <p><b>ARE AWARDED ON A</b></p> <p>first-come, first-served basis;</p> | <p>3</p> <p><b>OFFER A MAXIMUM ANNUAL CREDIT OF</b></p> <p>\$300,000 per taxpayer &amp; \$600,000 per couple;</p> | <p>4</p> <p><b>CAN BE CLAIMED BY</b></p> <p>individuals, businesses, or financial institutions;</p> | <p>5</p> <p><b>AND ARE NOT</b></p> <p>transferable or refundable.</p> |
|---|--|---|---|---|

\*Qualified community foundations are confirmed in compliance with the National Standards for U.S. Community Foundations.

## THIS INNOVATIVE STATEWIDE PROGRAM:

- |   |   |
|---|---|
|  <p><b>STRENGTHENS</b> communities through philanthropy;</p>                               |  <p><b>PROVIDES</b> a new opportunity for collaboration;</p>                                 |
|  <p><b>LEVERAGES</b> 4 private dollars for every public dollar invested in the program;</p> |  <p><b>ENCOURAGES</b> contributions that provide support now and in the future;</p>          |
|  <p><b>CREATES</b> charitable giving vehicles in communities of all sizes;</p>             |  <p><b>DEVELOPS</b> local community leadership; and</p>                                     |
|  <p><b>KEEPS DOLLARS IN IOWA</b> and invests in Iowa's future;</p>                          |  <p>positions Iowa as a <b>NATIONAL LEADER</b> in supporting and promoting philanthropy.</p> |

*Endow Iowa grows assets for the future of our state.*

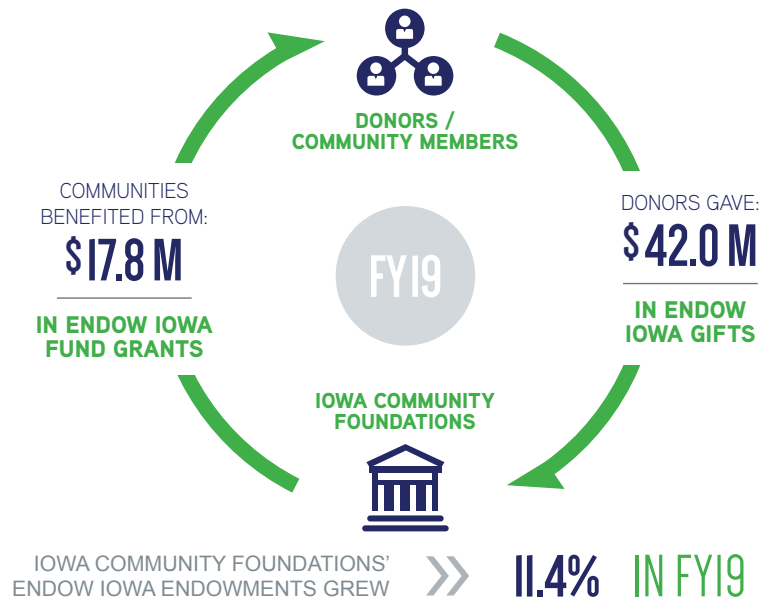
## GROWTH OF ENDOWED ASSETS AT ACCREDITED COMMUNITY FOUNDATIONS AND THEIR COUNTY AFFILIATES:

**2005** \$ 95,657,632    >>>    **2019** \$903,653,475    >>>    **TOTAL GROWTH** \$807,995,843    =    **845% GROWTH**

*Endow Iowa helps donors and community foundations invest in our state.*

Today **4,385** nonprofits and charitable causes in Iowa are supported by Endow Iowa endowment fund payouts annually.

Gifts from community foundation endowments support charitable causes that advance the state of Iowa's priorities such as economic development, education, arts and culture and so much more.



*Demand continues to grow for this worthwhile program.*



**ALL 2019 CREDITS**  
AWARDED

**FEB 7, 2019**



**ALL 2020 CREDITS**  
ALLOCATED

**DEC 24, 2019**



**ALL NEW GIFTS**  
WAIT LISTED UNTIL

**JAN 1, 2021**

The \$6M tax credit cap has been reached earlier and earlier each year. Donors must now wait at least one full year after they have made their gift to claim their Endow Iowa tax credit. The \$6M in 2021 tax credits will likely be allocated via a wait list before the end of 2020.

#### QUALIFIED IOWA COMMUNITY FOUNDATIONS

Cedar Falls Community Foundation  
Community Foundation of Carroll County  
Community Foundation of Greater Des Moines  
Community Foundation of Greater Dubuque  
Community Foundation of Greater Muscatine  
Community Foundation of Johnson County  
Community Foundation of Northeast Iowa  
Community Foundations of Southwest Iowa/Omaha Community Foundation  
Fort Dodge Community Foundation & United Way

Greater Cedar Rapids Community Foundation  
Greater Poweshiek Community Foundation  
Keokuk Area Community Foundation  
Pella Community Foundation  
Pottawattamie County Community Foundation  
Quad Cities Community Foundation  
Siouxland Community Foundation  
South Central Iowa Community Foundation